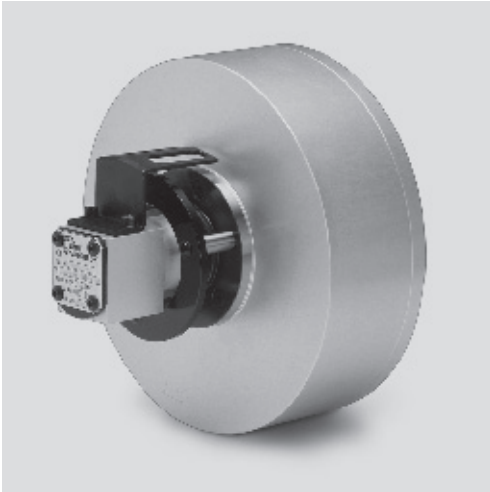


- up to 7 bar
- stroke control
- safety valve optional



Application/customer benefits

- Actuation of power chucks and special automatic clamping equipments
- Use on machines not equipped with hydraulic power unit as traditional lathes or special CNC machines.

Technical features

- Operating pressure 1–7 bar
- Horizontal or vertical installation
- Air-manifold mounted on precision bearings
- Stroke control via proximity switch
- Double safety valve (option)
- CSN 100 and CSN 150 = mounting from the rear side
- CSN 200 and CSN 250 = mounting from the front side
- An aircservice unit with dryer, filter and oiler is needed

Standard equipment

Closed center pneumatic cylinder
with stroke control and proximity switch
support (without proximity switch)

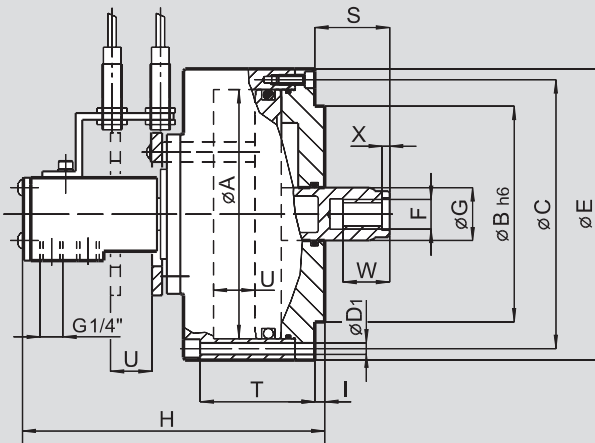
Ordering example

Cylinder type CSN 100 No. 33072110
or
Cylinder type CSN 150 No. 33072115
with safety valve (optional)

Technical data

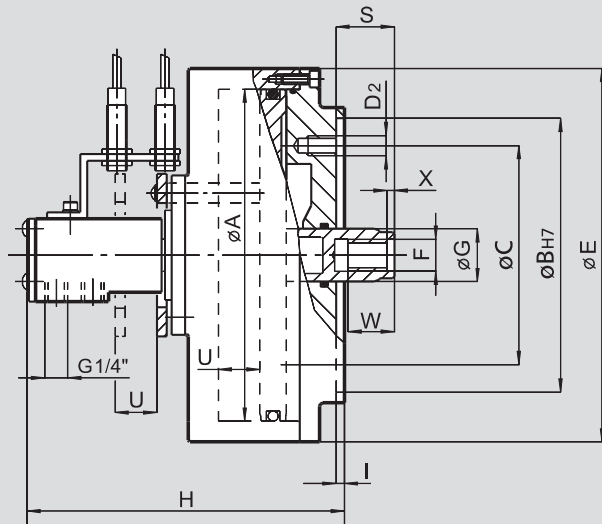
SMW-AUTOBLOK Type		CSN 100	CSN 150	CSN 200	CSN 250
Id. No.		33072110	33072115	33072120	33072124
Piston area	cm ²	71	176	306	482
Max. pressure	bar	7	7	7	7
Traction at 6 bar	kN	4.3	10	18	29
Max. speed	r.p.m.	4500	4500	4500	4500
Weight	kg	5	8	11	16
Moment of inertia	kg·m ²	0.01	0.03	0.06	0.18

CSN 100 - 150



Subject to technical changes
For more detailed information please ask for customer drawing

CSN 200 - 250



External safety valve assembly Id. No. 07941010

SMW-AUTOBLOK Type			CSN 100	CSN 150	CSN 200	CSN 250
Piston diameter	A	mm	100	150	200	250
	B	mm	80	130	165	165
Fixing bolts circle	C	mm	112	162	132	132
Fixing bolts diameter	D1	mm	6 x Ø7	6 x Ø7	-	-
Threaded fixing holes	D2	mm	-	-	3 x M12	6 x M12
	E	mm	125	175	225	275
	F	mm	M16	M16	M18	M18
	G	mm	30	30	32	32
	H	mm	171	171	190	190
	I	mm	5	5	5	5
	max. S	mm	35	35	35	35
	T	mm	60	60	-	-
Piston stroke	U	mm	20	20	25	25
	W	mm	20	20	30	30
	X	mm	4	4	5	5